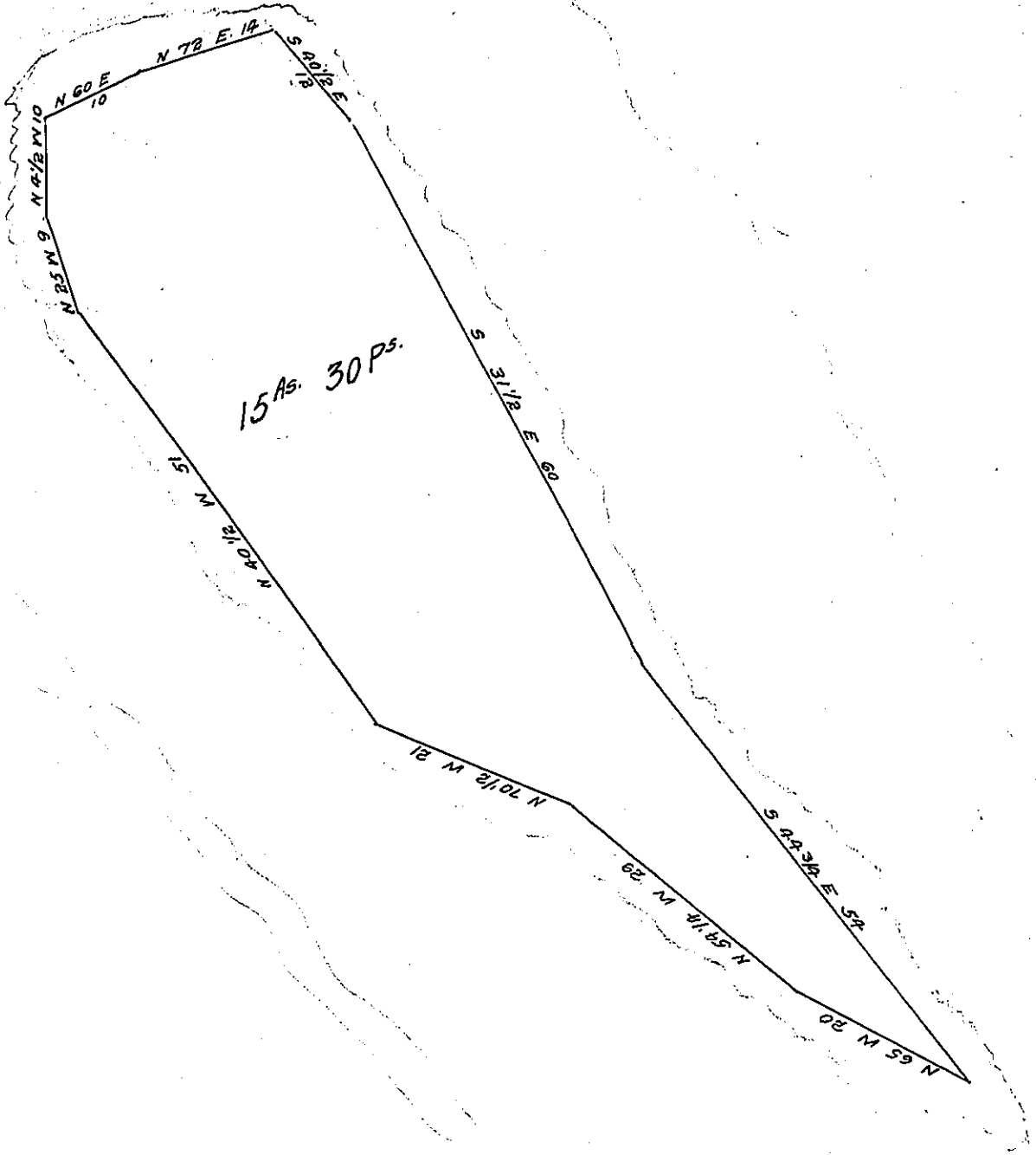


FORM NO 1.



The above is a draught of White Island situated in the river Susquehanna, in Drumore Township, Lancaster County, and contains fifteen acres and thirty perches strict measure, opposite to lands of Benjamin Hammond on the east side of said river, and lands of Thomas B. Coleman on the west side. Surveyed in pursuance of a warrant granted to James L. McCall, dated the 30th day of November 1835.

By James Calwell, D.S.

To Jacob Spangler Esqr.  
Surveyor General Penna.

IN TESTIMONY that the above is a copy of the original remaining on file in the Department of Internal Affairs of Pennsylvania, made conformably to an Act of Assembly approved the 16th day of February, 1833, I have hereunto set my Hand and caused the Seal of said Department to be affixed at Harrisburg, this twelfth day of December 1907.

*Henry Horner*  
Secretary of Internal Affairs.